

caracole



VICTORIA CHAIR

9270-004-a

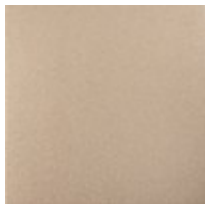
COLLECTION: VICTORIA

DIMENSIONS: 32.5W x 36D x 34H

This shapely chair adds a note of effortless glamour in a cream performance basketweave with a subtle luster. Gently sloping arms lend a contemporary take on the classic English arm for a look that's fresh, yet familiar. Tapered legs in a Sparkling Argent finish add to its shimmer. Sofa and sectional also available.

CONSTRUCTION: No sag seat. | Blendown cushion.

FINISH:



Sparkling_Argent

FABRIC:



Body Fabric: 2810-
35CC-P
Performance