

# caracole



## ALL TRIMMED OUT

cla-016-205

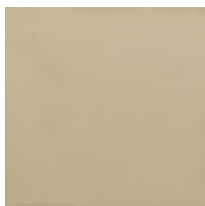
**COLLECTION:** CARACOLE CLASSIC

**DIMENSIONS:** 83W x 46D x 30H

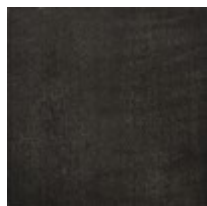
For large dining parties, this Charcoal Anegre table is unmatched. The delicately figured wood, in a bowed rectangular shape, has graceful chamfered corners detailed with outstretched, Whisper of Gold metal caps. The entire apron is rimmed in a thin Whisper of Gold bead as it sits on modern cabriole legs tipped in custom gold ferrules. For dining at its best, this piece is All Trimmed Out and expands from 83 inches to 123 inches with two 20-inch leaves.

**CONSTRUCTION:** Bottom of apron to floor: 26.5"

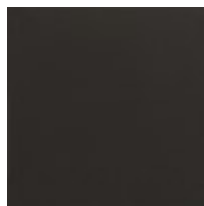
### FINISH:



Whisper of Gold



Charcoal Anegre



Seal Skin