

# caracole



## OVER THE EDGE

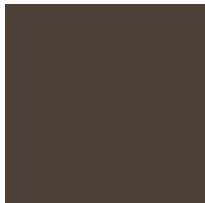
cla-020-213

**COLLECTION:** CARACOLE CLASSIC

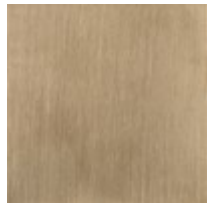
**DIMENSIONS:** 80W x 18D x 32H

Bring a modern form to traditional dining with our Over the Edge buffet, finished in Warm Slate and a mix of polished marble and stone. Graphic slat details add dimension to this contemporary design, balanced on tapered metal legs in Champagne Gold. Perfect for happy hours and hosting, it offers generous storage with two drawers, adjustable shelves and open space, neatly concealed by touch-latch doors. Or, style as a statement-making console in living rooms, halls, and entryways.

### FINISH:



Warm Slate



Champagne Gold