

# caracole



## YOUR MOVE

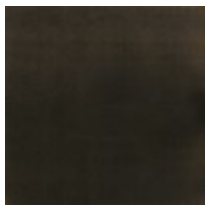
cla-021-081

**COLLECTION:** CARACOLE CLASSIC

**DIMENSIONS:** 21 dia x 16H

A simple design with sophisticated style, this round ottoman adds dimension and tactile appeal to living and bedroom interiors. Fully upholstered in a Belgian cut velvet with an over-scaled botanical pattern, it introduces a welcoming organic element with a touch of glamour. Features a scalloped wood base with hidden casters that make it easy to move around the room. Tuck a pair beneath our Check Mate cocktail table for a soft touch and extra seating when entertaining guests.

### FINISH:



Almost-Black

### FABRIC:

