

# caracole



## HANG UP DRESSER

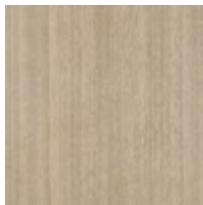
cla-022-013

**COLLECTION:** CARACOLE CLASSIC

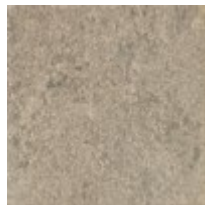
**DIMENSIONS:** 70W x 19D x 32H

A refined assemblage of materials, the Hang Up dresser melds the beauty of wood with the allure of metal. Drawing the eye: drawer fronts in an ambiguous broken metallic leaf that takes on the shimmer of a frost-covered, candle lit window. A recessed metal frame adds depth and dimension, complemented by tapered pulls, wrapped in hand-stitched faux leather and accented by brushed gold and nickel. Features linen-painted interiors with top drawer dividers and a removable jewelry tray.

### FINISH:



Dry Martini



Winter Frost



Brushed Gold