

# caracole



## TOULOUSE

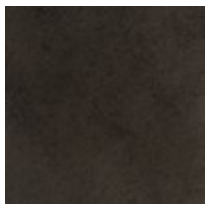
cla-023-083

**COLLECTION:** CARACOLE CLASSIC

**DIMENSIONS:** 67W x 17.25D x 30.5H

Fashionably tailored in a wool blend fabric with a micro stripe, this elegant bench recalls the exquisite metalwork of wrought iron furniture found in French patio gardens. Its curved metal frame adds warmth and subtle shimmer, accentuated by decorative balls in a Brushed Gold finish. Features an open design that can float in a room, or style at the end of our Provence bed to complete the look.

### FINISH:



Craftsman Bronze



Brushed Gold

### FABRIC:



2988-77CC-P  
Performance