

caracole



FULL BREAK

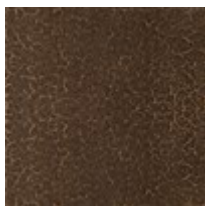
cla-023-405

COLLECTION: CARACOLE CLASSIC

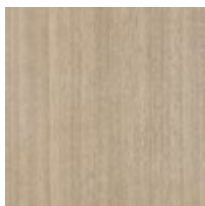
DIMENSIONS: 54W x 27D x 15H

Like a pair of pants precisely tailored to fall just above the shoe, this cocktail table speaks to the delicate tension between texture and material. Features an ample top in a darkly contrasting Forest Craze finish, balanced on a swooping Koto wood base that appears to defy gravity. An asymmetrical beaded spline in Brushed Gold lends separation and a luxe finishing touch.

FINISH:



Forest Craze



Dry Martini



Brushed Gold