

caracole



ALL DRESSED UP

cla-417-032

COLLECTION: CARACOLE CLASSIC

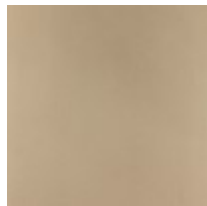
DIMENSIONS: 76W x 19D x 36H

Abundantly graceful, this nine-drawer dresser will elevate the design quotient of any space. Its balanced silhouette is distinguished by Koto panels in Champagne Shimmer and highlighted with Taupe Paint inside and out. Look in the top left drawer and find an ultra-functional jewelry tray that makes it easy to find favorites. Yet it's the remarkable drawer pulls crafted from insets of dark Mother of Pearl and highlighted with a Whisper of Gold finish that distinguish this gorgeous masterpiece.

FINISH:



Champagne
Shimmer



Taupe Paint



Whisper of Gold