

# caracole



## SOCIAL CIRCLE

cla-418-413

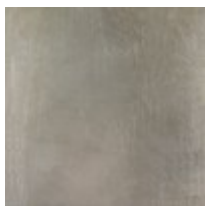
**COLLECTION:** CARACOLE CLASSIC

**DIMENSIONS:** 27 dia x 24H

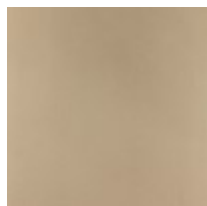
Perfectly proportioned and gracefully appointed, this round end table adds instant sophistication. A distinctive metal fretwork design in a pleasing open graphic pattern distinguishes its round lower shelf. Its round glass top features a 1 1/4" bevel and is creates just the spot for a favorite book or beverage. An open design feels light yet substantial, while the lovely combination of neutral Taupe Paint highlighted by Taupe Silver Leaf will complement any fabric or finish in the room.

**CONSTRUCTION:** Floor to shelf: 3.500". | Distance above the shelf: 17.750".

### FINISH:



Taupe Silver Leaf



Taupe Paint

