

# caracole



## A NEW DAY

cla-419-211

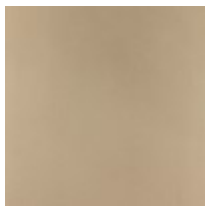
**COLLECTION:** CARACOLE CLASSIC

**DIMENSIONS:** 75W x 20D x 39.5H

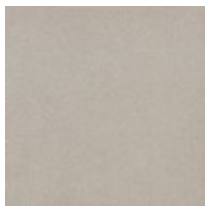
Give your room endless character by incorporating this shapely, shimmering cabinet in your design plan. Serpentine in shape, it boasts an intriguing mix of materials and features extraordinary curved glass doors crafted with a textured pattern on the inside. Metal posts and hardware finished in plated Deep Bronze add contrast to its Taupe Paint and Soft Silver Paint exterior. Ideal in the dining room or living room, this stunning design casts a warm metallic glow when bathed in light.

**CONSTRUCTION:** Leg: 13" H | Int side (two shelves): 18.5 x 13 x 8.5 Bottom/8.5 middle/ 7 Top (adj) | Int Center (one shelf): 33 x 15 x 9.75 bottom/8 top (adj) | Center Int drawer: 26 x 14 x 3

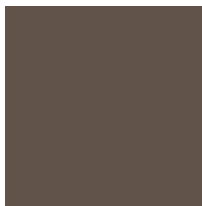
### FINISH:



Taupe Paint



Soft Silver Paint



Deep Bronze