

# caracole



## PERFECTLY ADAPTABLE

cla-419-413

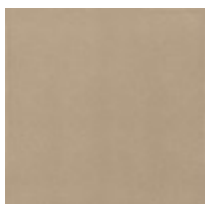
**COLLECTION:** CARACOLE CLASSIC

**DIMENSIONS:** 18W x 27D x 25H

Perfectly balanced in every way, this brilliant table is a true essential. Minimal by design, its streamlined form is smartly scaled and designed to blend seamlessly into any setting. Its modern mix of materials includes a clear glass top, a metal frame finished in Neutral Metallic, and a lower shelf crafted of a back-painted mirror featuring a Silver Leaf pattern. For storage, serving or display—this stylish piece fits the occasion.

**CONSTRUCTION:** Leg: 5.5" H | Storage: 17 x 26 x 18

**FINISH:**



Neutral\_Metallic

