

caracole



FOR ALL THE WORLD TO SEE

cla-419-446

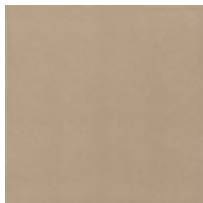
COLLECTION: CARACOLE CLASSIC

DIMENSIONS: 60W x 15.25D x 34H

As entrancing as crystal-clear waters, this glass console offers everything you'd want in a display piece and more. Ideal for showing off shells, sea glass, and beach treasures, its top features elegant glass panes framed in metal and highlighted with a Neutral Metallic finish. Each of its three top compartments has an individual lift-up, metal-framed glass lid for showing off collectibles. The center section is open and the lower three compartments feature removable trays covered in faux Crème Shagreen. Airy, elegant and sparkling from every angle—this console makes the ultimate collector's piece.

CONSTRUCTION: Height of center open area: 18.750". | Leg: 3.75" H | 2 Bottom Side Loose Drawers/Box: 13.25 x 13.25 x 3 | Top Compartment: 15 x 58 x 3.5 | 2 Side Open Storage: 15.5 x 15 x 18.5 | Center Loose Drawer: 25 x 13.5 x 3

FINISH:



Neutral_Metallic