

# caracole



## OPEN SEATING

cla-421-283

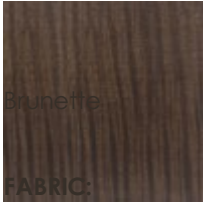
**COLLECTION:** CARACOLE CLASSIC

**DIMENSIONS:** 22.75W x 24D x 34H

Open and inviting with a dramatic curve to the back, this dining chair will delight guests and hosts alike. A warm Brunette finish accentuates its beautifully figured sycamore veneer and tall tapered legs, subtly contrasted by a light blue-gray performance fabric. Intentionally designed for a comfortable seating experience with the luxury of worry-free entertaining.

**CONSTRUCTION:** Curved Plywood Back. | Slip seat cushion

**FINISH:**



Bruneffe

FABRIC:



2859-52CC-P  
Performance