

# caracole



## MEANDROUS

cla-422-021

**COLLECTION:** CARACOLE CLASSIC

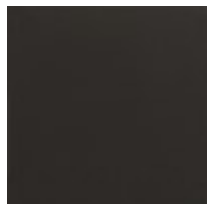
**DIMENSIONS:** 50W x 18D x 42H

Free-flowing in nature, this sinuously shaped dresser makes a simple, yet elegant, organic statement. Vinyl-wrapped drawer fronts accentuate its gentle curvature and offer subtle contrast to Koto veneers in a pearlescent Moonstone finish. Five soft-close drawers offer tucked-away storage, with horizontal hardware and painted interiors for an unexpected finishing touch. A removable tray in the top drawer neatly keeps jewelry, trinkets, and cufflinks.

### FINISH:



Moonstone



Seal Skin

### FABRIC:



9125-86CC-P  
Performance