

caracole



WANDERING

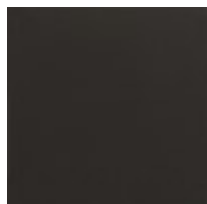
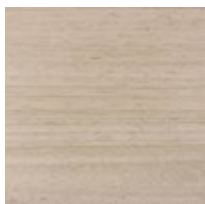
cla-422-064

COLLECTION: CARACOLE CLASSIC

DIMENSIONS: 25W x 19D x 28H

Elliptical in shape, this small-scaled nightstand introduces an alluring form with organic simplicity. A pearlescent Moonstone finish highlights the intricate wood grain of Koto veneers, intricately pieced to create a radial pattern on top. Vinyl-wrapped drawer fronts lend crisp contrast, accented by sleek vertical hardware in a Deep Bronze finish.

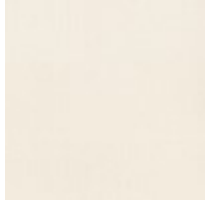
FINISH:



Moonstone

Seal Skin

FABRIC:



9125-86CC-P
Performance