

# caracole



## FULL BREAK

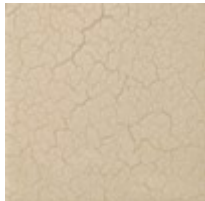
cla-423-404

**COLLECTION:** CARACOLE CLASSIC

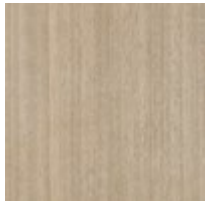
**DIMENSIONS:** 54W x 27D x 15H

Like a pair of pants precisely tailored to fall just above the shoe, this cocktail table speaks to a delicate tension between texture and material. Features an ample top in an Ivory Craze crackle finish, balanced on a swooping Koto wood base that appears to defy gravity. An asymmetrical beaded spline in Brushed Gold lends separation and a luxe finishing touch.

### FINISH:



Ivory Craze



Dry Martini



Brushed Gold