

caracole



SMOULDER SQUARE END TABLE

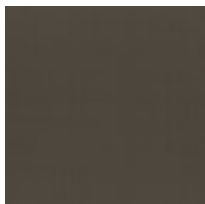
cla-423-418

COLLECTION: CARACOLE CLASSIC

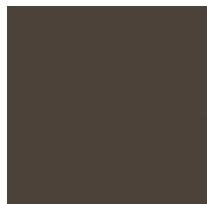
DIMENSIONS: 22W x 22D x 25H

An essential end table with a classic square shape and an antique mirrored top for added depth and reflection. Its delicate yet durable design features a Brushed Deep Bronze metal frame with tall tapered legs and Warm Slate wood shelves for open storage and display. Elegant in its simplicity and moody mix of materials, it introduces a timeless style with endless potential.

FINISH:



Brushed Deep
Bronze



Warm Slate

