

# caracole



## FRITZA BUNCHING END TABLES

cla-424-425

**COLLECTION:** CARACOLE CLASSIC

**DIMENSIONS:** 22W x 21.5D x 24H

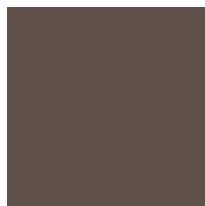
Inspired by Klimt's belief in the inseparable being of thing, these nesting tables are works of art from every angle. Their bean- and oval-shapes of varying sizes shine with Smoked Bronze glass on top, wide curved and spherical Deep Bronze metal legs, top and bottom wood panels dressed in Charcoal Leaf and a sleek plinth base in Almost black. Pair the tables together, or arrange them separately, they will make a statement either way.

**CONSTRUCTION:** Large table: 22W x 12D x 24H | Small table: 17W x 10D x 20H

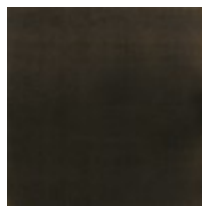
### FINISH:



Charcoal Leaf



Deep Bronze



Almost Black

