

caracole



ECHO

cla-424-442

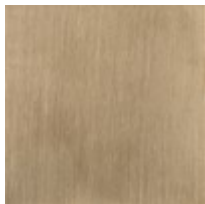
COLLECTION: CARACOLE CLASSIC

DIMENSIONS: 66W x 17.5D x 32H

The universe conspires in this ultra-contemporary two-piece interpretation of a console table. The center of this piece is an ovalshaped surface of Smoked Bronze mirrored glass perched on four tapered pencil legs. Hovering at one end of the mirrored glass is a small, round Grey Onyx marble piece. Floating under the mirrored tabletop is a softly triangular table of white marble with a center chasm that stands on three legs. The metal frame and legs are in Champagne Gold, making for an out-of-this-world table. The piece can be showcased as one piece or separate pieces.

CONSTRUCTION: Tall Table: 62W x 16D x 32H | Short Table: 29W x 17.5D x 27H

FINISH:



Champagne_Gold