

# caracole



## THE LOW DOWN

con-closto-076

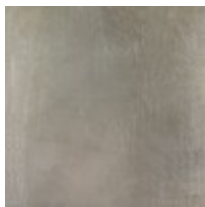
**COLLECTION:** CARACOLE CLASSIC

**DIMENSIONS:** 55W x 15D x 18.25H

Add a little luster to a cozy den or a bedroom with this small scale entertainment console. At 55-inches it's the perfect size for most flat screen televisions. Clean lines and streamlined proportions define this modern console and a beautiful hand-rubbed Taupe Silver Leaf finish ensure that it will go with any decor. For larger great rooms or a media rooms, two or more consoles can be adjoined to accommodate larger 80-inch televisions.

**CONSTRUCTION:** Shelf behind doors: 26"W x 13"D. | Area without shelf: 26"W x 13"D x 15"H.

**FINISH:**



Taupe\_Silver\_Leaf