

# caracole



## REMIX DOUBLE DRESSER

m113-019-011

**COLLECTION:** MODERN REMIX

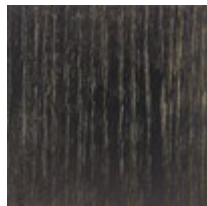
**DIMENSIONS:** 66W x 18D x 35H

If ever there was a dresser that could make you stop and do a double-take, this is the one. Bold in character, its modern mix of finishes and materials conveys understated urban flair. A rich Black Stained Ash finish wraps around its clean-lined silhouette while its drawer fronts are highlighted in Cerused Oak paired with coordinating custom hardware. With eight drawers, fully finished in Black Stained Ash, there's room for all of your wardrobe essentials. The character of this fashion-forward double dresser is further enhanced by its metal frame and trim finished in a softly reflective Bronze Metallic Paint.

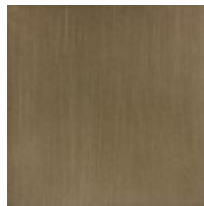
### FINISH:



Black Stained Ash



Cerused Oak



Bronze Gold Metal