

# caracole



## BALANCE

m141-023-041

**COLLECTION:** MODERN PRINCIPLES

**DIMENSIONS:** 46W x 12D x 72H

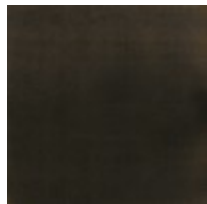
With a dramatic yet playful aesthetic, this free-standing floor mirror draws the eye upward and expands the room. Framed in Lucent Bronze Metallic, it adds depth and a sculptural element defined by simple forms and organic materials. Interchangeable shapes let you play with perspective and change the view.

**CONSTRUCTION:** Metal Mirror 36W x 1.25D x 72H | Stone Ball 12Dia. x 11.25H | Wood Turning 8"D x 42H

### FINISH:



Lucent Bronze  
Metallic



Almost Black

