

# caracole



## ARCH SUPPORT

uph-018-033-a

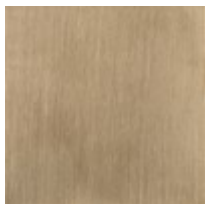
**COLLECTION:** CARACOLE UPHOLSTERY

**DIMENSIONS:** 28.5W x 37.5D x 32.25H

Whether you escape here to relax yourself or offer it to your guests, this chair's destined to be the star of the room. A style standout, it features shapely arms crafted of clear acrylic and reminiscent of a chic roadster. Expertly tailored upholstery in a basketweave, menswear-inspired fabric features soft shades of bittersweet chocolate and shimmering taupe while a Champagne Gold finish highlights its custom designed metal base and legs. At home in any space, this curvaceous chair is truly a modern masterpiece.

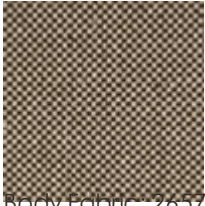
**CONSTRUCTION:** Plush poly foam cushion. | 8-Way hand tied seat.

**FINISH:**



Champagne\_Gold

**FABRIC:**



Body Fabric: 2657-  
80CC