

# caracole



## WELT PLAYED

uph-019-0310-b

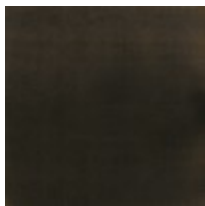
**COLLECTION:** CARACOLE UPHOLSTERY

**DIMENSIONS:** 39W x 40D x 32.5H

Drawing inspiration from Fashion Week in Paris, the Welt Played chair offers modern styling brought to life with warmth and texture. Tailored in a smoky taupe performance fabric, it features clean lines and linear forms outlined with contrasting welts in a cream velvet. The resulting aesthetic is one of understated sophistication. Collection includes a matching sofa and sleeper with three different colorway options.

**CONSTRUCTION:** Springdown cushion. | 8-Way hand tied seat. | Feather down pillow.

### FINISH:



Almost-Black

### FABRIC:



Pillow Fabric: 1-19" x  
19" Pillow 2831-  
71CC



Body Fabric: 2830-  
71CC-P  
Performance with  
Contrast Welt 2832-  
34CC