

caracole



TAILORED TO A T

uph-021-036-a

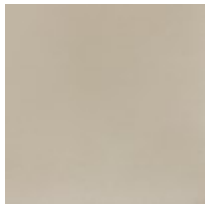
COLLECTION: CARACOLE UPHOLSTERY

DIMENSIONS: 22.75W x 26.75D x 30.75H

An alluring counterpart to desks and vanities, this shapely silhouette is designed with a classic barrel shape and comfortably curved, open back. Finely tailored in a softly textured chenille performance fabric with a silver metallic ground, it adds an air of refinement to bedrooms, living rooms, and work-from-home spaces. Hidden casters make it easy to move, for a versatile style, room to room.

CONSTRUCTION: Webbed seat. | Plush poly foam cushion.

FINISH:



Putty

FABRIC:



Body Fabric: 2864-
82CC