

caracole



SLIPPERY SLOPE

uph-021-037-a

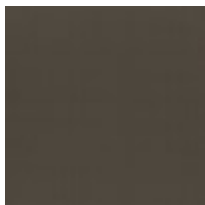
COLLECTION: CARACOLE UPHOLSTERY

DIMENSIONS: 29.25W x 36.5D x 35.5H

Classic elegance with a modern vibe, this accent chair makes an unforgettable statement. Arching metal arms in Brushed Deep Bronze add warmth and a dramatic curve to its sleek profile, complemented by shapely turned legs. Perfectly pitched for a comfortable sit with a plush seat and down-blend back cushion, masterfully upholstered in a lustrous silver sage velvet.

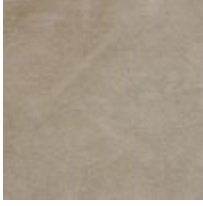
CONSTRUCTION: 8-way hand tied seat. | Springdown seat cushion. | Blendown back cushion.

FINISH:



Brushed_Deep_Bronze

FABRIC:



Body Fabric: 2872-
77CC