

# caracole



## COUNTER BALANCE CHAIR

uph-022-032-a

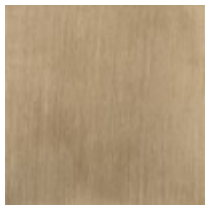
**COLLECTION:** CARACOLE UPHOLSTERY

**DIMENSIONS:** 36.5W x 38.25D x 25.5H

A perfect alignment of texture, material and design intention lends a soft-lined yet sophisticated style to seating areas. Dressed in an oatmeal melange woven fabric with subtle rust threading, its comfortable design features channel-tufted arms and a loose back cushion, propped by a faux-leather-wrapped, counter balance capped in Champagne Gold. Reeded cast legs add tactile appeal and a note of distinction.

**CONSTRUCTION:** 8-way hand tied seat. | Spring down cushions.

### FINISH:



Champagne\_Gold

### FABRIC:



Back Wood Rod:



9179-78CC

Body Fabric: 4128-  
30CC-P  
Performance