

# caracole



## BUSTLE

uph-022-293-a

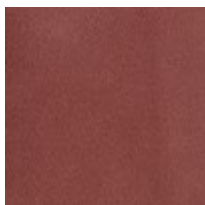
**COLLECTION:** CARACOLE UPHOLSTERY

**DIMENSIONS:** 22W x 26D x 30.75H

This petite seat calls to mind the exquisite detail and drape of a bustle dress, fashionable during the late 1880s. Its elegant silhouette features a low camelback and dressmaker skirt in a dusty rose fabric, cinched together by textured metal brackets in Brushed Gold for a jewelry-like finish. Perfectly scaled to accompany a dressing table or vanity.

**CONSTRUCTION:** Webbed seat. | Foam seat cushion.

### FABRIC:



Body Fabric: 2917-18CC



Skirt Flap: 2937-19CC

