

# caracole



## UNDER CURRENTS

uph-419-ac2-a

**COLLECTION:** CARACOLE UPHOLSTERY

**DIMENSIONS:** 29.5W x 37.25D x 28.25H

Fresh yet understated, the armless chair of this stunning modular sectional embodies easygoing elegance. Its fresh coastal personality shines through in a palette of soft neutrals paired with sea glass blue-greens. Undulating lines mimicking waves are quilted into the outside back of this sectional and add to its unique presence. A soft Whisper of Gold finish lends a touch of sheen to its base and legs. For gatherings large or small, this sophisticated sectional conveys comfort and style.

**CONSTRUCTION:** Spring down cushion. | 8-Way hand tied seat. | Feather down pillows.

**FINISH:**

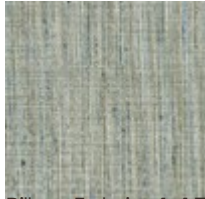


Whisper\_of\_Gold

**FABRIC:**



Body Fabric: 2702-  
87CC-P  
Performance



Pillow Fabric: 1-17<sup>mm</sup> x  
17<sup>mm</sup> Pillow 2703-  
52CC