

caracole



SPLASH OF FLASH CHAIR

uph-420-132-b

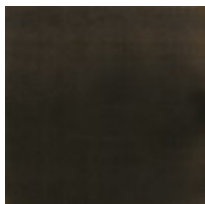
COLLECTION: CARACOLE UPHOLSTERY

DIMENSIONS: 30.5W x 33.5D x 33H

Tailored to perfection in an ivory linen woven fabric, this fresh take on a classic Caracole design features a softly curved silhouette dramatically defined by an Almost Black finish. Delicate metal ferrules and knuckles on the front arms draw their inspiration from an antique Italian parlor chair. The essence of sophistication, this chair blends seamlessly with a spectrum of styles.

CONSTRUCTION: 8-way hand tied seat. | Spring down cushion.

FINISH:



Almost-Black

FABRIC:



Body Fabric: 2998-
34CC-P
Performance