

# caracole



## TUXEDO CHAIR

uph-423-033-b

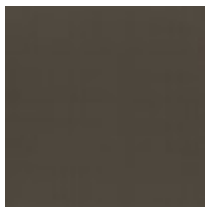
**COLLECTION:** CARACOLE UPHOLSTERY

**DIMENSIONS:** 39W x 36.5D x 29H

Exuding warmth and comfort with an air of confidence, this classic shelter arm chair features clean lines and crisp tailoring in a fresh neutral colorway. Inspired by modern takes on the iconic tuxedo, its enveloping silhouette is wrapped in a textured woven, complemented by a faux mohair opal fabric on the inside arms, seat and back. Metal legs in brushed deep bronze add warmth and a dashing finish, complemented by a tonal chenille toss pillow

**CONSTRUCTION:** 8-Way hand tied seat. | Plush poly foam cushion. | Feather down pillows.

**FINISH:**

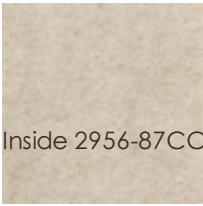


Brushed\_Deep\_Bronze

**FABRIC:**



Body Fabric: Outside  
2966-74CC-P  
Performance



Inside 2956-87CC



Pillow Fabric: 1-22''' x  
20''' pillow fabric  
2940-34CC