

caracole



TUXEDO ARMLESS CHAIR

uph-423-as1-a

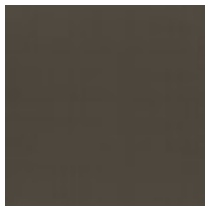
COLLECTION: CARACOLE UPHOLSTERY

DIMENSIONS: 34.5W x 38.75D x 29.75H

A fashionable component of our classic shelter arm sectional, with clean lines and crisp tailoring in a deep chocolate brown hue inspired by modern takes on the iconic tuxedo. Impeccably dressed, its sophisticated silhouette is punctuated by a luxe faux mohair fabric on the inside, and a textured woven fabric wrapping the back. Metal legs in brushed deep bronze add warmth and a dashing finish, complemented by accentuating toss pillows in a tactile mix.

CONSTRUCTION: 8-Way hand tied | Blenddown Supreme Cushion | Feather down pillows

FINISH:



Brushed_Deep_Bronze

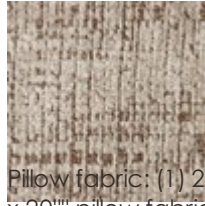
FABRIC:



2956-81CC



Outside 2966-80CC



Pillow fabric: (1) 22"
x 20" pillow fabric
2959-79CC