

# caracole



## LUMI RAF CHAISE

uph-424-rh2-a

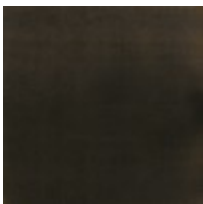
**COLLECTION:** CARACOLE UPHOLSTERY

**DIMENSIONS:** 66.5W x 38.5D x 27H

The Lumi Chaise slightly bends to create a gentle curve as part of the right side of the Lumi Sectional. You will want to sink into its ivory plushly-stuffed seat. The back extends three-quarters of the length of the piece. The body of the chaise is fully upholstered in a microribbed linen blend, while two cushions feature an Ivory mohair and wool-blend velvet. The chair's pegged feet pop from underneath in Almost Black.

**CONSTRUCTION:** 8-way hand tied seat | Spring down cushion | Feather down pillows

**FINISH:**



Almost-Black

**FABRIC:**



Body Fabric: 2637-  
34CC-P  
Performance, Back  
Cushion 2681-34CC-  
P