

# caracole



## ICE BREAKER

uph-chawoo-71a

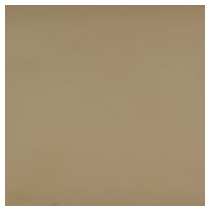
**COLLECTION:** CARACOLE UPHOLSTERY

**DIMENSIONS:** 35.5W x 36D x 27.5H

Get the party started with a chair they'll be talking about long after they leave. We design our product with our clients' satisfaction in mind. Custom engineered frame wrapped in a Gold Bullion metal tone. A micro-herringbone pattern in off-white linen-blend fabric offers simplistic beauty.

**CONSTRUCTION:** Spring down cushion. | 8-way hand tied seat.

**FINISH:**



Gold\_Bullion

**FABRIC:**



Body Fabric: 2321-  
87CC